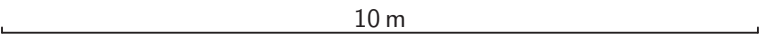
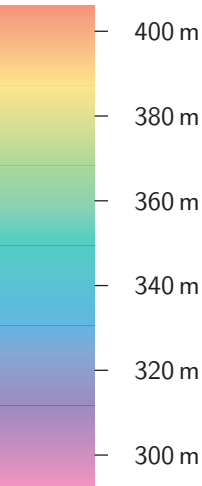


Pwll Dwfn  
Plan view



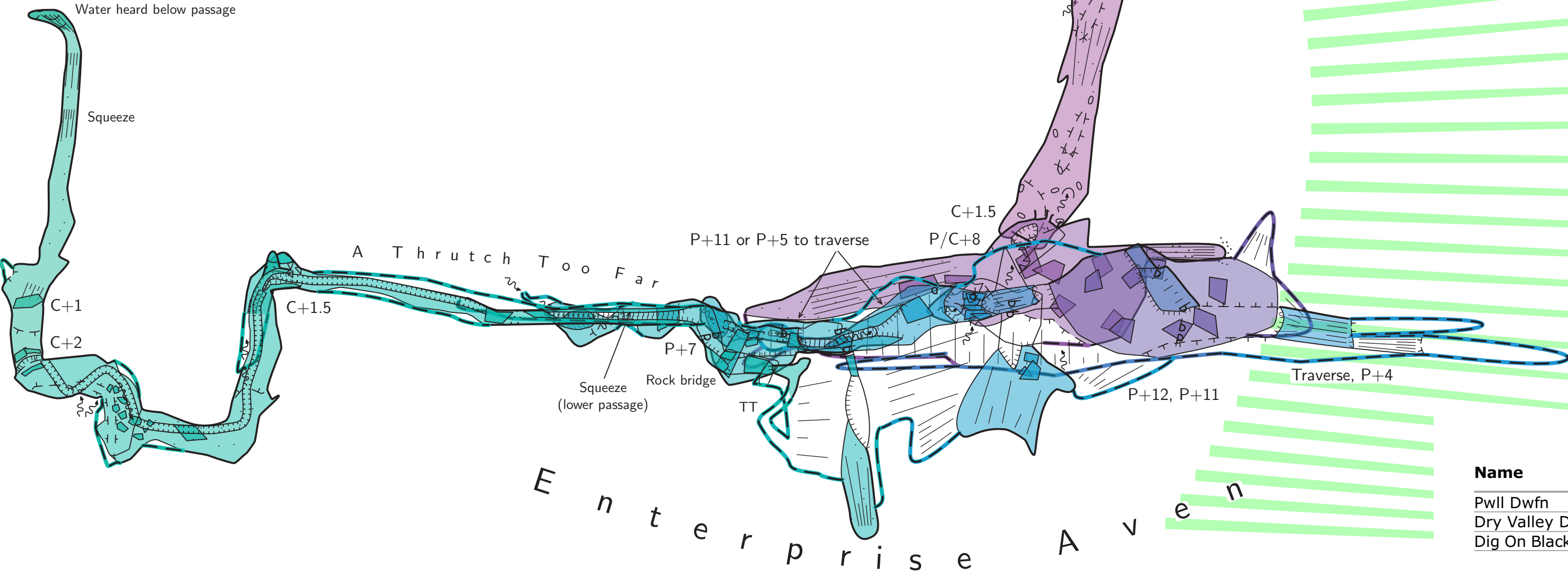
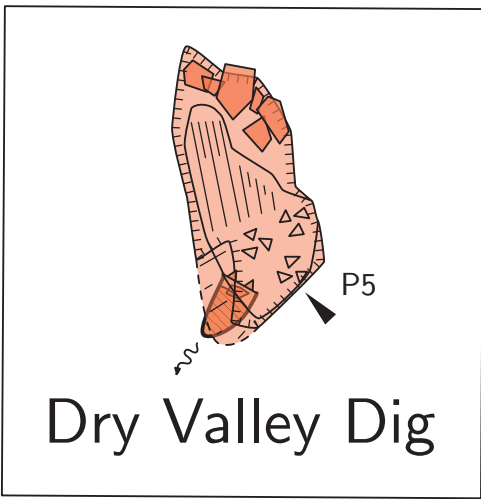
Grade: BCRA 6d  
Surveyed by: Gareth Davies, Tarquin Wilton-Jones 2019 – 2022  
Drawn by: Gareth Davies, Tarquin Wilton-Jones 2019 – 2025  
(c) Cartographers, Surveyors (data) 2019 – 2025

Altitudes



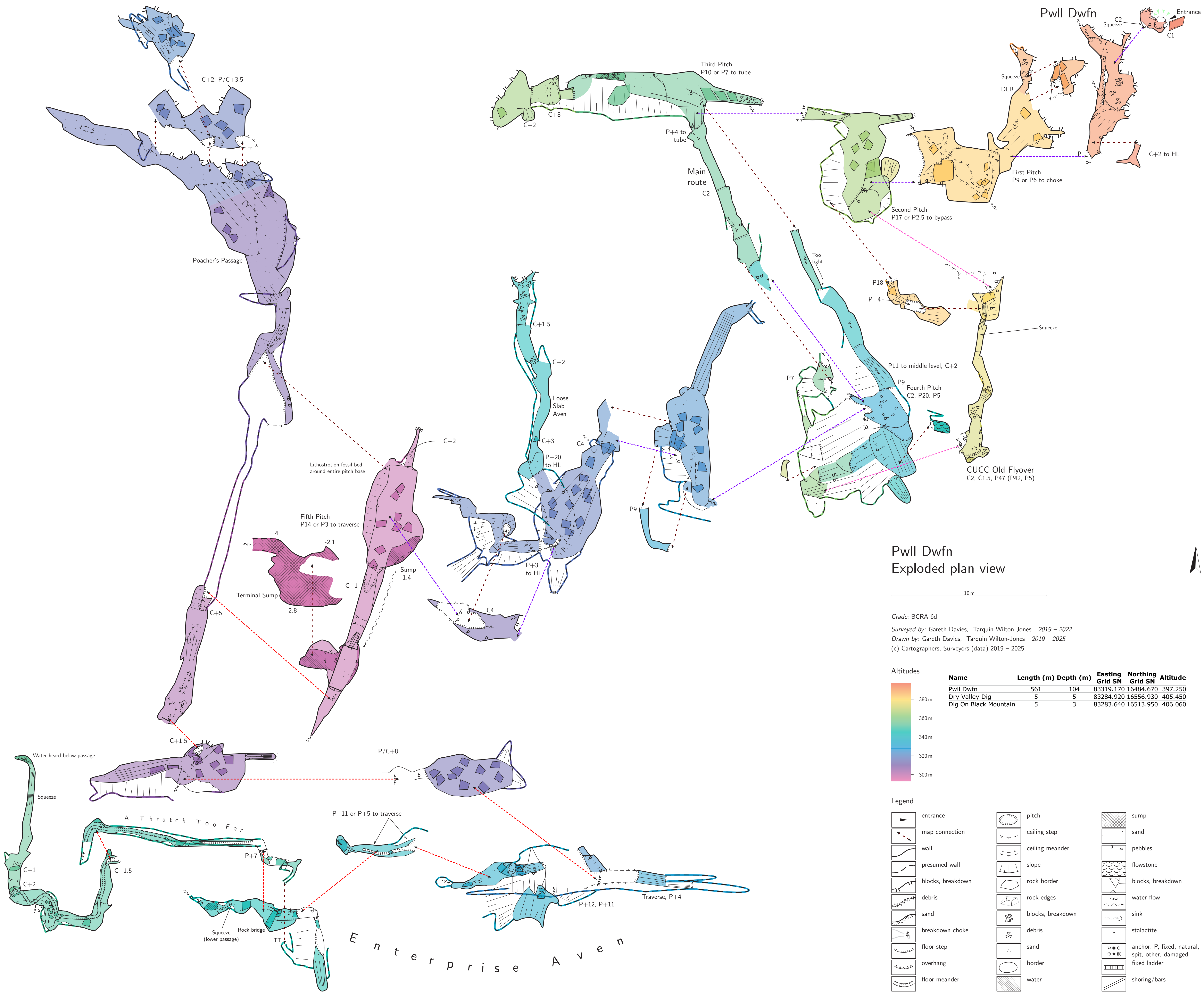
Legend

- entrance
- wall
- presumed wall
- blocks, breakdown
- debris
- sand
- breakdown choke
- floor step
- overhang
- floor meander
- pitch
- ceiling step
- ceiling meander
- slope
- rock border
- rock edges
- blocks, breakdown

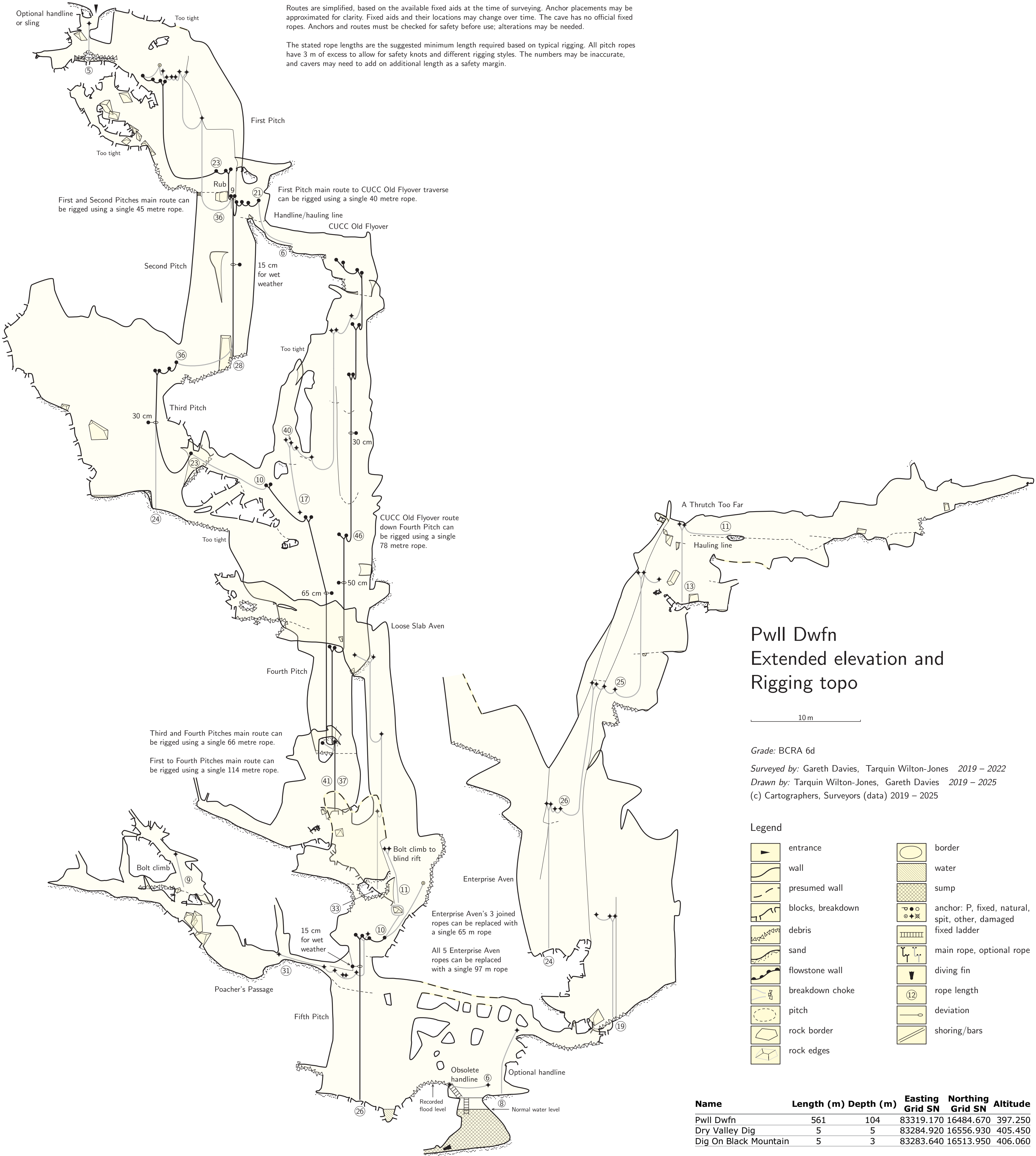
debrissandbordertemporary borderwatersumpsandpebblesflowstoneblocks, breakdownwater flowsinkstalactiteanchor: P, fixed, natural, spit, other, damagedfixed laddershoring/bars

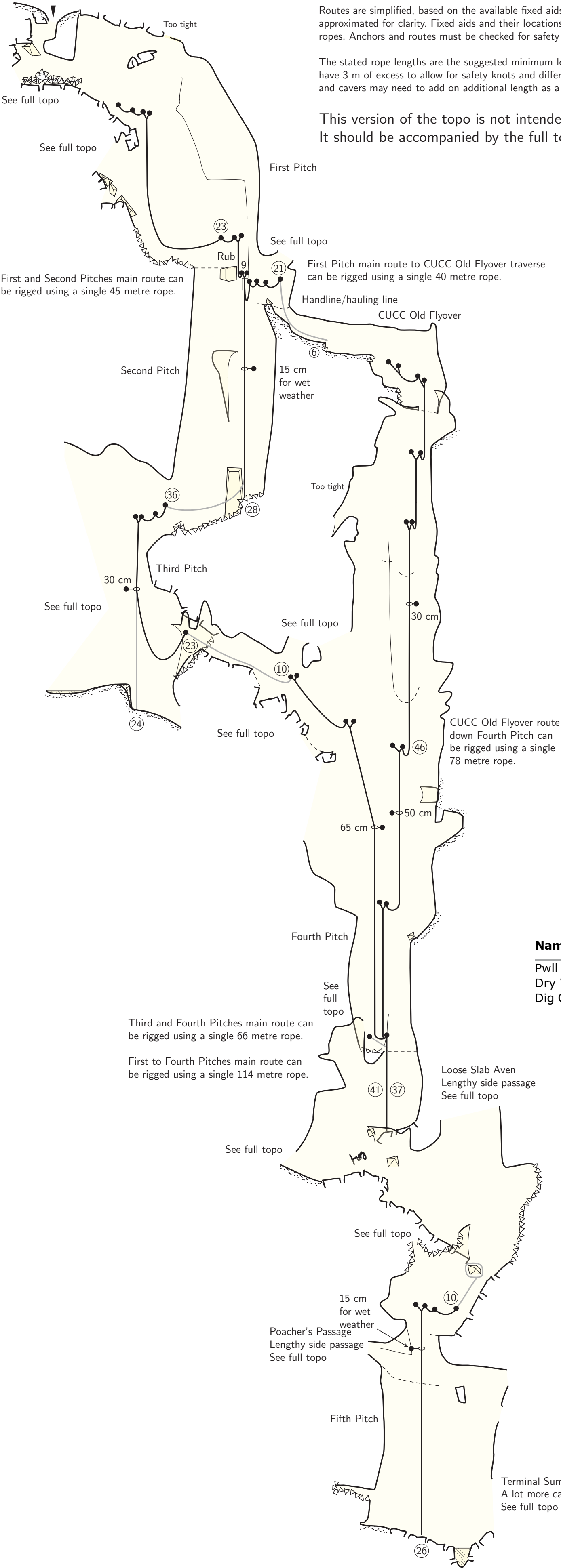
Name	Length (m)	Depth (m)	Easting Grid SN	Northing Grid SN	Altitude
Pwll Dwfn	561	104	83319.170	16484.670	397.250
Dry Valley Dig	5	5	83284.920	16556.930	405.450
Dig On Black Mountain	5	3	83283.640	16513.950	406.060











Routes are simplified, based on the available fixed aids at the time of surveying. Anchor placements may be approximated for clarity. Fixed aids and their locations may change over time. The cave has no official fixed ropes. Anchors and routes must be checked for safety before use; alterations may be needed.

The stated rope lengths are the suggested minimum length required based on typical rigging. All pitch ropes have 3 m of excess to allow for safety knots and different rigging styles. The numbers may be inaccurate, and cavers may need to add on additional length as a safety margin.

This version of the topo is not intended to be distributed on its own.  
It should be accompanied by the full topo. If yours is missing, ask for it.

# Pwll Dwfn

## Maintained routes only

### Rigging topo

10 m

Grade: BCRA 6d

Surveyed by: Gareth Davies, Tarquin Wilton-Jones 2019 – 2022

Drawn by: Tarquin Wilton-Jones, Gareth Davies 2019 – 2025

(c) Cartographers, Surveyors (data) 2019 – 2025

Legend

entrance

wall

presumed wall

blocks, breakdown

debris

sand

breakdown choke

pitch

rock border

rock edges

border

water

anchor: P, fixed, natural, spit, other, damaged

main rope, optional rope

rope length

deviation

Name	Length (m)	Depth (m)	Easting Grid SN	Northing Grid SN	Altitude
Pwll Dwfn	561	104	83319.170	16484.670	397.250
Dry Valley Dig	5	5	83284.920	16556.930	405.450
Dig On Black Mountain	5	3	83283.640	16513.950	406.060



